



PLYMOUTH-CANTON
COMMUNITY SCHOOLS

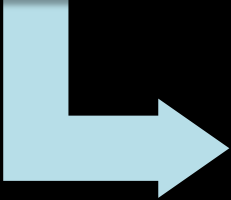
GLOBALLY FOCUSED. LOCALLY CONNECTED.

**Meeting #2 - Elementary
Visioning**

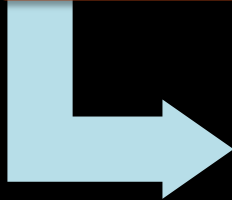
Agenda

- **Visioning Session #1 Summary**
- **Presentation of Guiding Principles**
- **Elementary Buildings Floor Plan Review**
- **Prioritization of Guiding Principles (Table Exercise)**
- **Visioning Session #3 – April 10, 2019**
Canton HS Little Theater - 5:30 pm - 7:00 pm.

Discovery



Exploration



Recommendation

...inder or help
...and goals. Evaluate
...to meet vision.

...end an option to the
Education *regarding*
future bond program initiative.

Welcoming

Inviting

Safe

Comfortable

Colorful

Engaging

Fun

Collaborative

Flexible

Open

Familiar

Adaptive

Unique

Friendly

Diverse

21st-Century

Loved

Multi-Sensory

Collaboration

Inspiring

Student-Centered

Opportunity

Organized

Happiness

Respectful

Comfort

Secure

Relaxing

Inclusivity

Engaging-the-Senses

Home

Innovative

Hands-On

Warm

Positive

Calm

Evolving

Nature

Interactive

Safety

Belonging

Creative

Personal

Educational

Active

Invitation-for-Learning

release



ions

a

program.

throughout the

that what we

ne District

Guiding Principles

Facilities and Program Assessment



District Vision and Goals

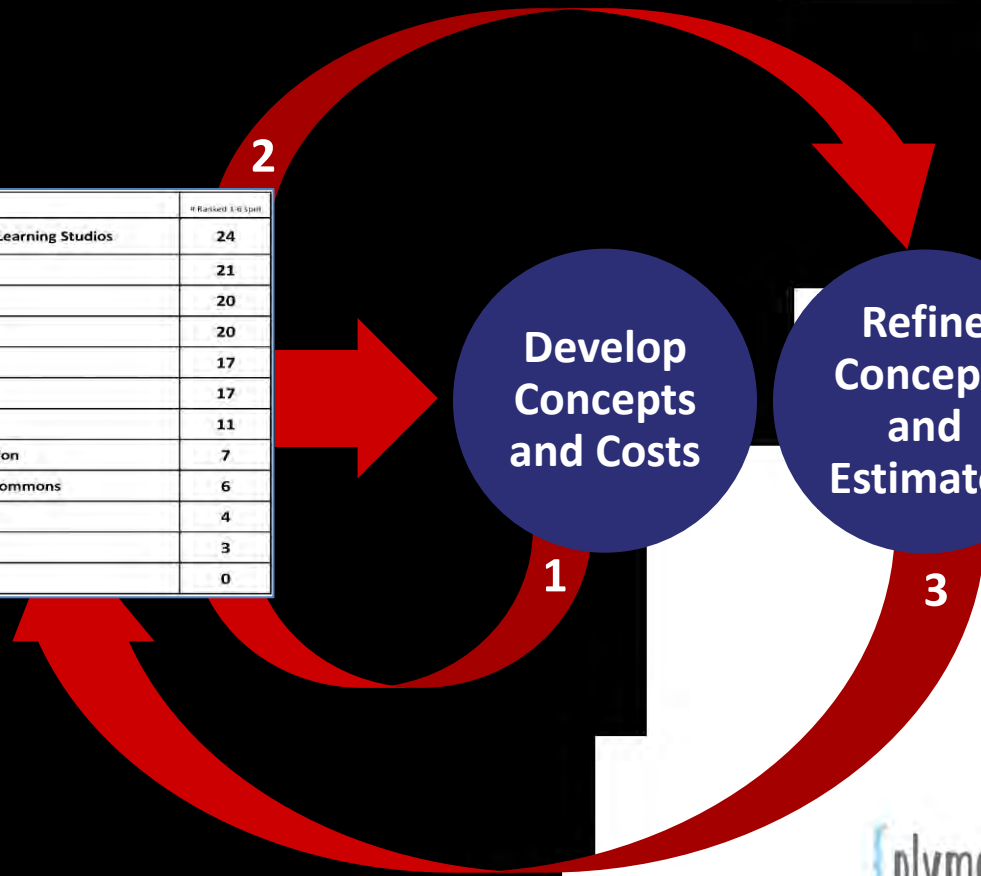


Modern Learning Environments

Guiding Principles	# Raised 1-6/Spill
Transform Classrooms into 21st Century Learning Studios	24
Meet Today's Technology Needs	21
Focus on Early Childhood Needs	20
Provide MS & HS STEM/STEAM labs	20
Secure Entries at all Schools	17
Create Shared Collaboration Spaces	17
Add Staff Collaboration Spaces	11
Add Spaces for Socialization and Interaction	7
Transform Media Centers into Learning Commons	6
Encourage & Support After-hours Usage	4
Corridors become Learning Streets	3
Create Eco-friendly Schools	0

Develop Concepts and Costs

Refine Concepts and Estimates



Transform our instructional spaces into flexible learning studios that contain mobile furniture to support 'hands-on', collaborative and project-based learning.



Taking into account our stable enrollment (10 years), create a district structure (square footage and number of buildings) that matches our future enrollment numbers to assure the most operationally efficient structure moving forward.



Develop professional space for faculty and staff to encourage team teaching, collaboration and interaction.



Develop flexible dining space that is separate from the gym and that can accommodate a wide variety of activities and programs.



Create secure entries improve the safety of our students and staff, but maintain a welcoming atmosphere for visitors.



Assure that all students and staff have access to up-to-date, interactive technology in their everyday instruction and learning.



Develop relationships and cultivate partnerships with community assets/local businesses as a way of providing richer programming for students.





Guiding Principles - Table

As a group, please discuss the Guiding Principles and choose your top 6 statements that represent your group's feelings about the top goals to consider in a future bond program. Place a star in the circle for those top 6.

- Transform our instructional spaces into flexible learning studios that contain mobile furniture to support 'hands-on', collaborative and project base learning*
- Create spaces for STEAM/STEM curriculum instruction that are flexible, adaptable and stimulating.*
- Taking into account our stable enrollment, create a district structure (square footage and number of buildings) that matches our future enrollment numbers to assure the most operationally efficient structure moving forward.*
- Consider the needs of our young children with facilities that are age-appropriate and designed to reinforce and celebrate their uniqueness.*
- Create secure entries at all District schools that not only improve the safety of our students and staff, but maintain a welcoming atmosphere for visitors.*
- Consider the unique requirements of our special students to enhance their everyday life and accommodate their social and physical needs*
- Create a media center/learning commons that allows flexible arrangement of furniture to accommodate the diverse needs of all students and programs.*
- Develop professional space for faculty and staff to encourage team teaching, collaboration and interaction*
- Develop flexible dining space that is separate from the gym and that can accommodate a wide variety of activities and programs*
- Assure that all students and staff have access to up-to-date, interactive technology in their everyday instruction and learning.*
- Develop relationships and cultivate partnerships with community assets/local businesses as a way of providing richer programming for students.*



**MAP REDACTED FOR
SECURITY PURPOSES**

EMENTARY SCHOOL



LEGEND

- S SCIENCE
- T TECHNOLOGY
- E ENGINEERING
- M MATH
- MAKERS SPACE
- SPECIAL PROGRAM
- EXISTING SECURE ENTRY

**MAP REDACTED FOR
SECURITY PURPOSES**



LEGEND

-  S SCIENCE
-  T TECHNOLOGY
-  E ENGINEERING
-  M MATH
-  MAKERS SPACE
-  SPECIAL PROGRAM
-  EXISTING SECURE ENTRY





BIRD ELEMENTARY SCHOOL
No Scale

**MAP REDACTED FOR
SECURITY PURPOSES**



LEGEND

-  SCIENCE
-  TECHNOLOGY
-  ENGINEERING
-  MATH
-  MAKERS SPACE
-  SPECIAL PROGRAM
-  EXISTING SECURE ENTRY



N

DODSON ELEMENTARY SCHOOL
No Scale

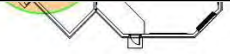
**MAP REDACTED FOR
SECURITY PURPOSES**

OFFICE
ITION &
RE ENTRY



LEGEND

- S SCIENCE
- T TECHNOLOGY
- E ENGINEERING
- M MATH
- MAKERS SPACE
- SPECIAL PROGRAM
- EXISTING SECURE ENTRY



ERIKSSON ELEMENTARY SCHOOL
No Scale

**MAP REDACTED FOR
SECURITY PURPOSES**



LEGEND

- S** SCIENCE
- T** TECHNOLOGY
- E** ENGINEERING
- M** MATH
- MAKERS SPACE**
- SPECIAL PROGRAM**
- EXISTING SECURE ENTRY**



FARRAND ELEMENTARY SCHOOL
No Scale

plymouth - canton
COMMUNITY SCHOOLS

MAP REDACTED FOR SECURITY PURPOSES

OFFICE
TION &
E ENTRY



LEGEND

- S SCIENCE
- T TECHNOLOGY
- E ENGINEERING
- M MATH
- MAKERS SPACE
- SPECIAL PROGRAM
- EXISTING SECURE ENTRY



FIELD ELEMENTARY SCHOOL
No Scale

{plymouth - canton}
COMMUNITY SCHOOLS

MAP REDACTED FOR SECURITY PURPOSES



LEGEND

-  SCIENCE
-  TECHNOLOGY
-  ENGINEERING
-  MATH
-  MAKERS SPACE
-  SPECIAL PROGRAM
-  EXISTING SECURE ENTRY



GALLIMORE ELEMENTARY SCHOOL
No Scale

**MAP REDACTED FOR
SECURITY PURPOSES**



LEGEND

- S SCIENCE
- T TECHNOLOGY
- E ENGINEERING
- M MATH
- MAKERS SPACE
- SPECIAL PROGRAM
- EXISTING SECURE ENTRY



HOBEN ELEMENTARY SCHOOL
No Scale

plymouth - canton
COMMUNITY SCHOOLS

MAP REDACTED FOR SECURITY PURPOSES

OFFICE
TION &
E ENTRY



LEGEND

- S SCIENCE
- T TECHNOLOGY
- E ENGINEERING
- M MATH
- MAKERS SPACE
- SPECIAL PROGRAM
- EXISTING SECURE ENTRY



HULSING ELEMENTARY SCHOOL
No Scale

**MAP REDACTED FOR
SECURITY PURPOSES**



ISBISTER ELEMENTARY SCHOOL
No Scale

**MAP REDACTED FOR
SECURITY PURPOSES**



LEGEND

- SCIENCE
- TECHNOLOGY
- ENGINEERING
- MATH
- MAKERS SPACE
- SPECIAL PROGRAM
- EXISTING SECURE ENTRY

MILLER ELEMENTARY SCHOOL
No Scale

**MAP REDACTED FOR
SECURITY PURPOSES**



SECURE
ENTRANCE



N

SMITH ELEMENTARY SCHOOL
No Scale

LEGEND

-  SCIENCE
-  TECHNOLOGY
-  ENGINEERING
-  MATH
-  MAKERS SPACE
-  SPECIAL PROGRAM
-  EXISTING SECURE ENTRY

**MAP REDACTED FOR
SECURITY PURPOSES**

LEMENTARY SCHOOL



LEGEND

- SCIENCE
- TECHNOLOGY
- ENGINEERING
- MATH
- MAKERS SPACE
- SPECIAL PROGRAM
- EXISTING SECURE ENTRY

**MAP REDACTED FOR
SECURITY PURPOSES**



LEGEND

- SCIENCE
- TECHNOLOGY
- ENGINEERING
- MATH
- MAKERS SPACE
- SPECIAL PROGRAM
- EXISTING SECURE ENTRY



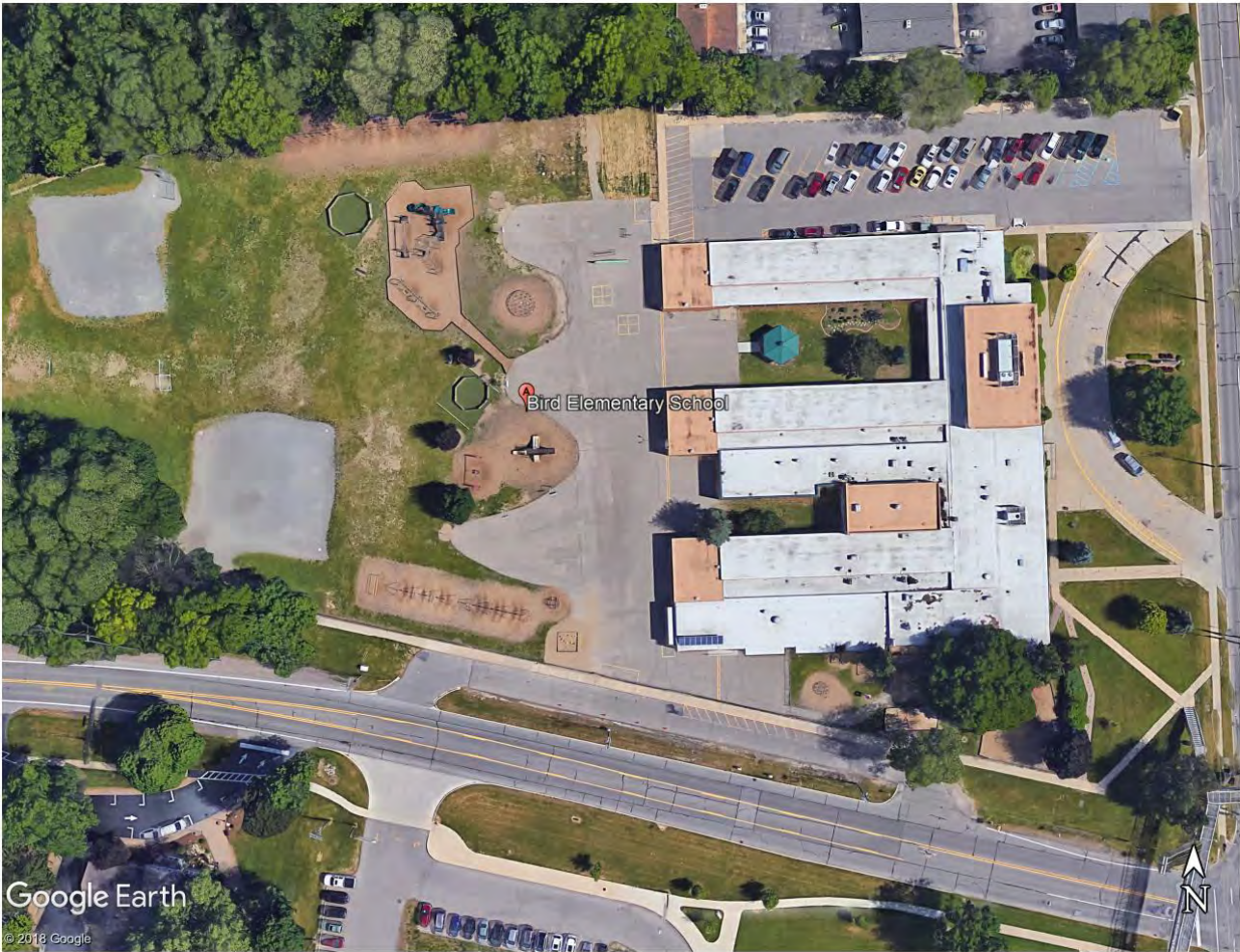
WORKMAN ELEMENTARY SCHOOL
No Scale



PLYMOUTH-CANTON
COMMUNITY SCHOOLS

Questions?

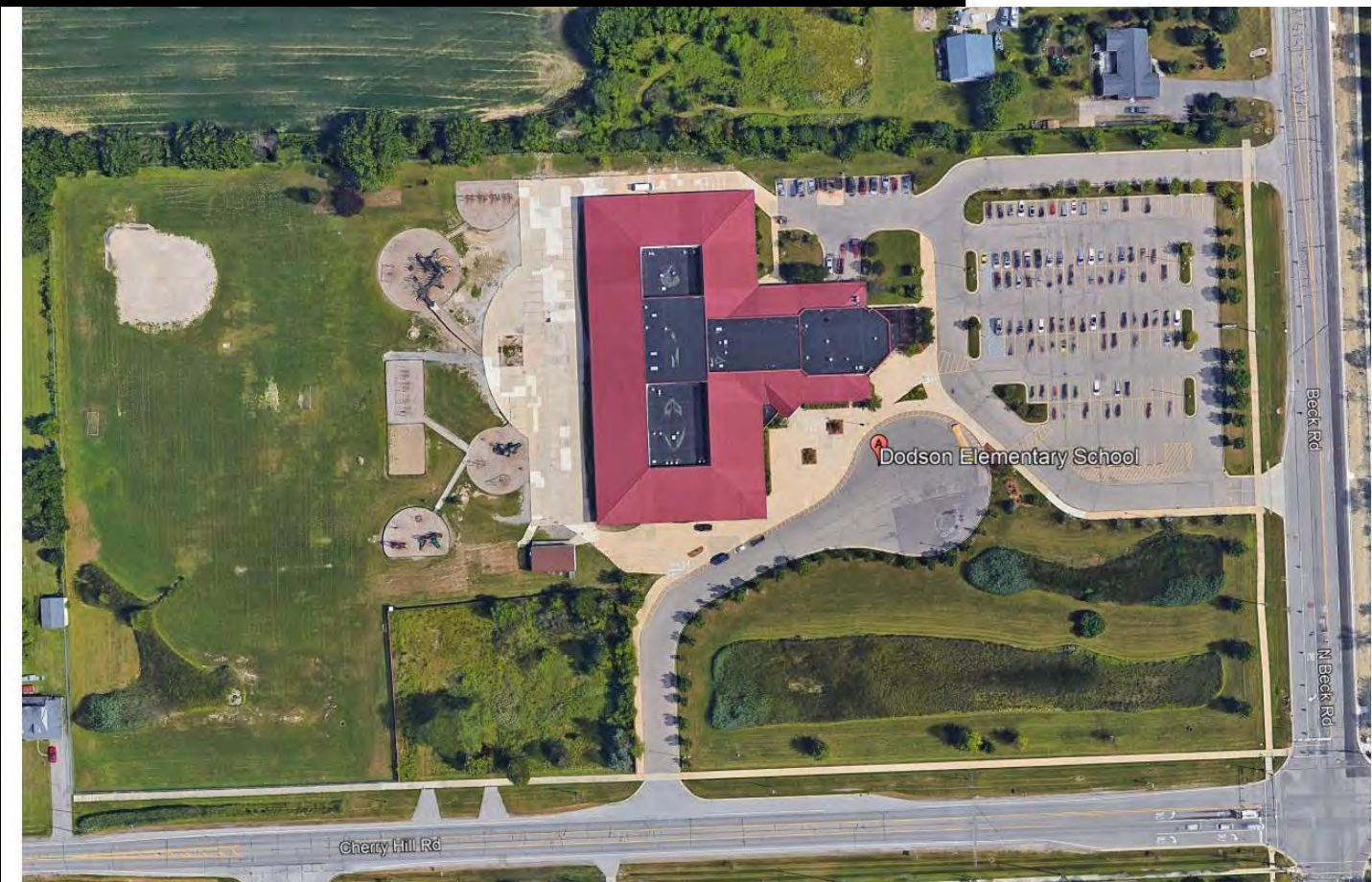




Google Earth

© 2018 Google

{plymouth - canton}
COMMUNITY SCHOOLS



Cherry Hill Rd

Dodson Elementary School

Beck Rd

N Beck Rd

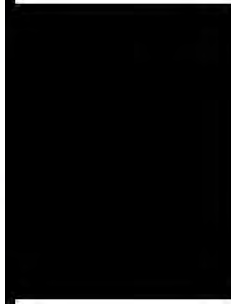






Field Elementary School







Google Earth

© 2018 Google



{plymouth - canton}
COMMUNITY SCHOOLS



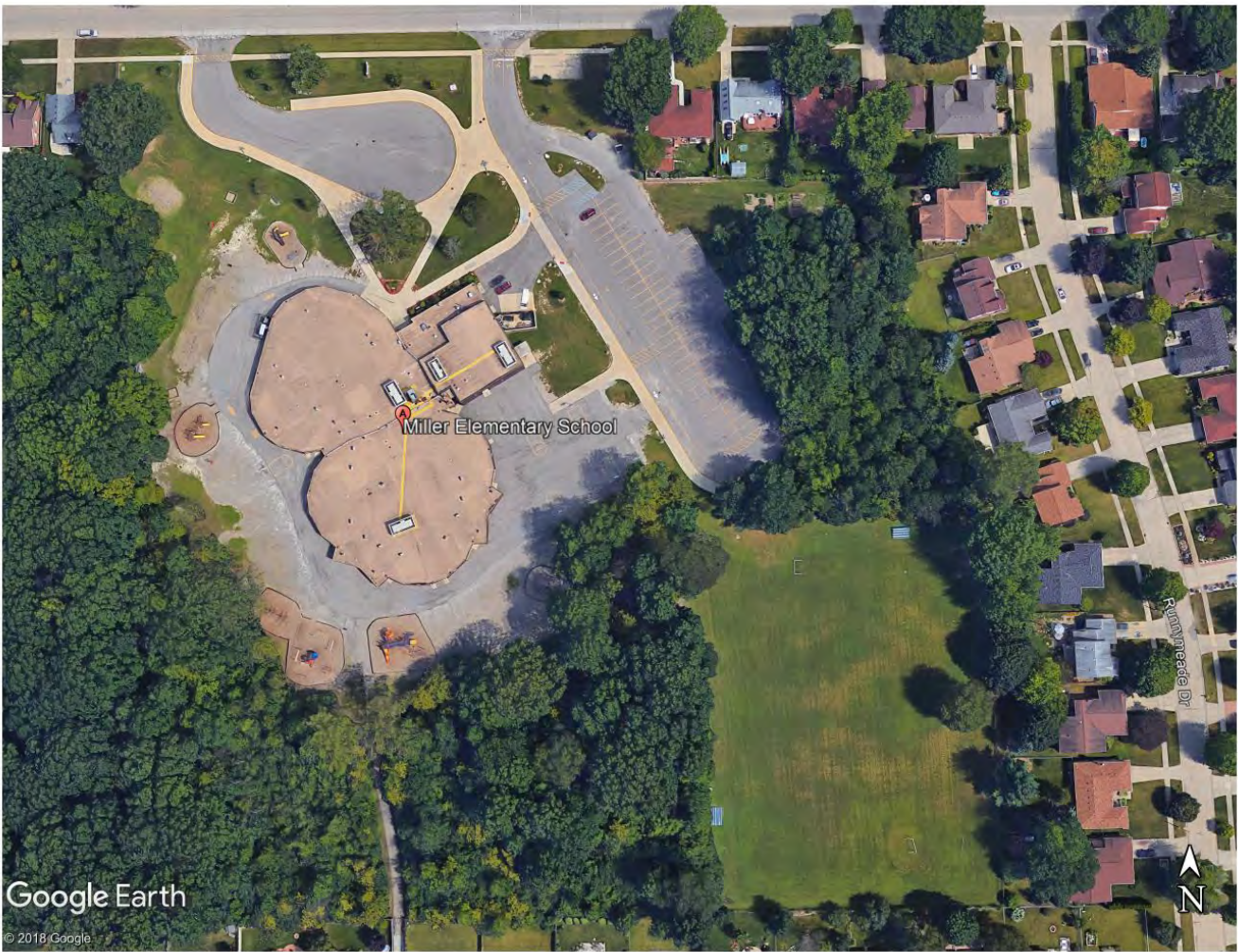
Isbister Elementary School

Google Earth

© 2018 Google



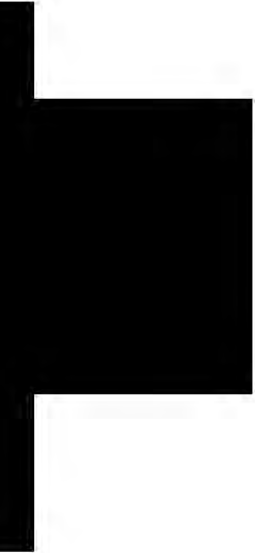
{plymouth - canton}
COMMUNITY SCHOOLS





Google Earth

© 2018 Google



{plymouth - canton}
COMMUNITY SCHOOLS

